



NEWS MAGAZINE

ISSUE 112-3 | July - September 2018

Image: Courtesy Chholing Taha



COMMUNITY SUPPORT



PLACE YOUR TRUST
IN HANFT FRIDE.

HANFT FRIDE
A PROFESSIONAL ASSOCIATION
hanftfride.com

CLOQUET 218-879-3333 DULUTH 218-722-4766



DAI Membership

We are excited to announce that our membership levels now have new benefits! We have also added a \$25 Student Membership that has the featured benefit of a Student Exhibition. All of the updated information is listed under the membership tab on our website.

Become a member and be part of a thriving arts community! Join now and receive a full year of benefits while supporting local art. Memberships start at \$60 and include free admission to the DAI Galleries, reduced admission to Depot Exhibits, 20-25% off art classes and 10% off art purchases, invitations to exhibition openings, the opportunity to show work in the Annual Membership Exhibition in January, and our news magazine delivered to your door. Visit www.duluthartinstitute.org to learn more and become a member today! If you have any questions regarding membership, please call our office at 218-733-7560.



Image: Duluth Art Institute

Thank you for your support!

Christina Woods

As deep layers of Superior Street are exposed as a sort of timeline into the past, I ponder about the ways the City of Duluth and the DAI sought to cultivate community. Over 110 years ago, the mission of the DAI was to ensure art was accessible to everyone and not just the wealthy. To accomplish the mission, the DAI sought to engage artists and viewers in the narratives of our region through pop up galleries. Today, the DAI has strengthened that position with a throwback to those original ideals. 90 years later, the DAI and City Hall are revitalizing a past practice to curate spaces in city hall. The DAI will start with works of Native Art from the Tweed Collection.



Following that, visual art will lift the voices of our neighbors who have experienced homelessness and/or re-entry from incarceration. We will explore the relationship between these two challenges.

The history of our members who were integral in setting up the DAI's current success is another story we tell. Through its power to save lives, visual art has lifted lives regionally for over 110 years. It's remarkable to think about the impact art has had on the community, individuals and artists. Honoring long time artists, supporters, and collectors paves the way to foster that art is for all. We thank the Joyce Mickelson family for inspiring us to look back to honor the innovative artists that inspired a vital art scene here in our region. We are also grateful for the legacy of John Steffl. His vision, heart, and will lives on here at the Duluth Art Institute. The DAI stands on the shoulders of so many talented, passionate, and dedicated artists, supporters, and collectors. We thank you, past and present!

Throughout the history of the DAI, we find endless examples of how the arts educate, activate, and archive our day to day life. We continue to value being informed about our community as we strive to explore ideas and turn them into engaging exhibitions and classes. With the current atmosphere in Duluth focusing on dismantling many social injustices; poverty, racism, and homelessness, we see how art mobilizes social change. We look to cultivate a vibrant community that drives cultural competency, connects to one another, and finds ways for individuals to thrive.

Visual art generates culture, community, and economy to nurture bridging art and everyday life. You are key in helping us foster programs that are accessible, reflective, and responsive to our community and region. Please join in our dynamic, innovative exhibition, and educational programming. It's you that guarantees the diversity of voices, mediums, and artists continues on.

We hope to see you soon.

Chholing Taha Every Spirit Tells a Story

Opening Reception and Artist Talk: July 12, 6 - 9 PM

On View: July 12 - September 2, 2018

George Morrison Gallery



Image: Chholing Taha, *River Spirit*

Chholing Taha is a CreeFirst Nations artist based in Anoka, MN who uses Native imagery to express both contemporary issues and indigenous stories. Solitude and wilderness have been a loyal companion throughout her lifetime.

Taha draws on symbols from tribes from the Northwest coast, where she is originally from, as well as the Great Lakes tribes, including Ojibwe Woodland. It is her heart's wish to instill a sense of mystery within anyone who views her work and discover that pulse within each spirit that beats together as one heart. These narratives find themselves with one hand holding the past bringing the new insights toward the hand holding the future.

Payton MacDonald Sonic Divide: States

Opening Reception: July 12, 6 - 9 PM

Project Screening at The Underground: July 12, 7:30 - 9 PM

On View: July 12 - September 2, 2018

John Steffl Gallery

The "Sonic Divide: States" film features 30 commissioned scores from 30 different composers performed during MacDonald's mountain bike journey along the Great Divide. Each musical work was scored specifically for his voice or found percussion instruments, like logs, rocks, or the bicycle itself.

Four paintings, by Duluth painter Kenneth D. Johnson, accompany the film. The pieces are based on photos taken in each of the four states Payton traveled through. Johnson's paintings introduce performance footage from each state, coupled with still images, to give the viewer a sense of the grandeur of making music in these incredible natural settings.

A screening of Payton's video project will take place at the Underground opening night, July 12, from 7:30 - 9 PM.



Image: Payton MacDonald, *Sonic Divide: States*

Amanda Breitbach Land/People

Opening Reception and Artist Talk: September 13, 6 - 9 PM

On View: September 13 - October 28

George Morrison Gallery

When Amanda Breitbach started this project three years ago, she wanted to make images that could speak about the growth of corporate agriculture at the expense of family farming and the cost of the industrial agriculture model - to the environment and to people.

Land/People investigates the decline of family farming and the emotional and spiritual issues that underlie the human relationship to land, making larger, universal relationships visible through Breitbach's, and her family's, own experiences.

The project combines panoramic and aerial images of her family's farmland in eastern Montana with intimate photographs of family members and domestic spaces. Viewers are invited to look both into and out of frames that emphasize the relationships between the spaces inside and those outside and to move between those spaces.

Sponsored by:



Image: Courtesy Amanda Breitbach

Aaron Squadroni Mesabi Land Portraits

Opening Reception and Artist Talk: September 13, 6 - 9 PM

On View: September 13 - October 28

John Steffl Gallery

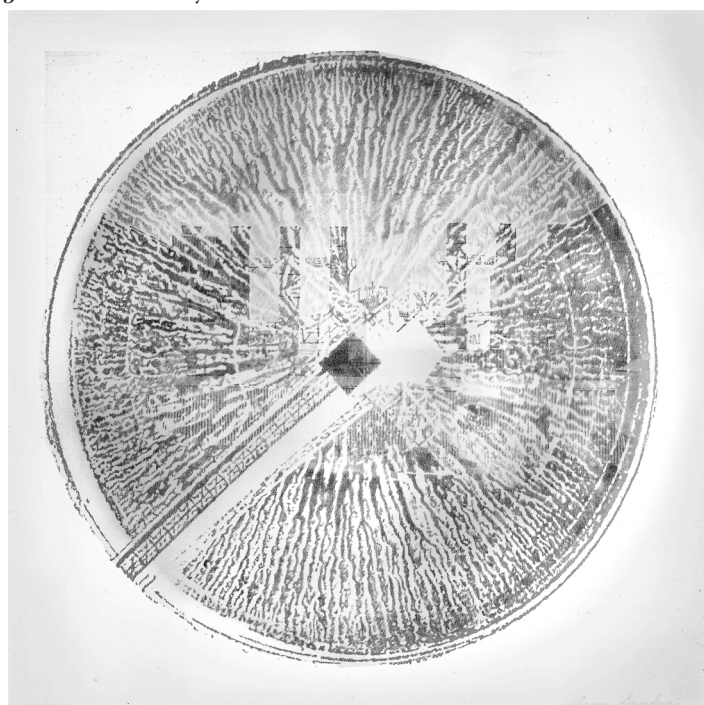


Image: Aaron Squadroni, *Fog*

Aaron Squadroni is an artist from the Mesabi Iron Range in northern Minnesota. His work is centered on mining imagery and metalpoint drawing techniques. Squadroni's most recent work focuses on the Hull Rust mine, located in Hibbing, Minnesota, which is one of the largest open-pit mines in the world.

He draws with metal and found mine materials such as overburden rock, tailings, and taconite pellets from or near the mine site. Due to the unpredictability of drawing with these materials, Squadroni approaches his drawings as a collection of experiments. Each aerial image is named according to the latitude and longitude of the location that it is taken from. Focusing on the themes of nature, industry, and memory, he creates drawings that explore the visible and unseen tensions in the mining landscape.

Call for Entries: 62nd Arrowhead Regional Biennial

Opportunity Closes: September 14, 2018

Fee (USD): \$20.00

Started in 1919, the Arrowhead Regional Biennial features the wide range of contemporary artwork being produced in the upper Midwest. Applicants residing in Minnesota, Wisconsin, North & South Dakota, Iowa, Michigan, and Ontario, Canada are encouraged to apply. Merit based cash awards will be named on the evening of the opening reception.

This year we are pleased to announce, Jehra Patrick as juror for 2018. Patrick is a visual artist, curator, and independent arts program producer, who works out of Minneapolis, MN. Jehra is a 2016 recipient of the Knight Arts Challenge and the Jerome Travel and Study Grant for Digital Producers, a 2018, 2015, and 2013, recipient of the Minnesota State Arts Board Artist Initiative Grant, a 2013 recipient of the McKnight Next Step Fund, and a 2011 recipient of the Jerome Foundation Fellowship for Emerging Artist.

In addition to her work as an artist, Jehra Patrick is Gallery Director and Curator for the Law Warschaw Gallery at Macalester College where she oversees the gallery's exhibition program and the college's art collection, creating networked exhibitions and audiences relevant on campus and in the community. Previously, Jehra served as Program Director for mnartists.org, where she oversaw the program's digital advancement, events, and outreach.

Jehra founded Waiting Room and workroom, both new, non-fixed curatorial platforms which support artists through visual and personal networks. Jehra is a frequent writer, lecturer, visiting critic, and independent program organizer, on topics relevant to practices of visual artists.

To submit an application: <https://duluthartinstitute.slideroom.com/#/permalink/program/30700>

Information regarding the 62nd Arrowhead Regional Biennial can also be found on the Duluth Art Institute website.

Additional questions: Jason Pearson at jpearson@duluthartinstitute.org

CALL FOR ENTRIES

exhibition

01/11/2019
03/31/2019

juror: Jehra Patrick

06/08/2018
09/14/2018

Minnesota Wisconsin North Dakota South Dakota Iowa Michigan Ontario Canada

apply



Art Canopy

Tuesdays, July 10, 17, 24, 31

Under the Duluth Depot Canopy on Michigan Street

FREE

Adventure into art with free demonstrations and art making experiences this summer. Each week find yourself immersed in creativity. Get inspired and get messy! Free and open to the public.

Free Mrs. Delicious treats to the first 25 participants on July 10th!

Member Guided Tours

with Curator Jason Pearson

July 19, August 16, September 20, 6 - 7 PM

George Morrison Gallery

Members are invited to a special once a month event with our Curator, Jason Pearson. Take the time to tour the gallery, ask questions, and engage in deeper discussion about the current exhibitions at the Duluth Art Institute. This event takes place on the third Tuesday of every month. We hope you that you will join us!

July 21, 2018

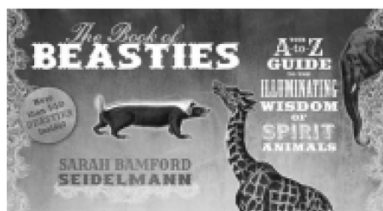
Come to Barnes & Noble to meet local author Sarah Seidelmann and support the Duluth Art Institute!

Show or mention this voucher at check out all day in store (July 21, 2018 only), and Barnes and Noble will DONATE A PORTION OF YOUR SALE to the Duluth Art Institute! Any purchase in the Cafe counts as well!

B&N will be hosting author Sarah Seidelmann who will be signing copies of her new book release and giving a free animal reading, an event not to miss!

Can't make it on this date? Input ID# 12383444 at checkout online.

Online sales placed from 7/21 - 7/26 are eligible. *Some exclusions apply. See bn.com for details.



ID #12383444

Niiyo-wiij-anishinaabeg (Four Friends)

On View: June 29 - July 24, 2018
Depot Great Hall

The Duluth Art Institute, St. Louis County Historical Society, and Historic Union Depot Corporation are privileged to show over fifty pieces of work by three prolific artists. Carl Gawboy, George Morrison, and Joe Geshick impact the lives of countless Anishnaabe through their profound, personal expressions of visual art. Niiyo-wiij-anishinaabeg (Four Friends) celebrates the individual's journey including the viewer, the fourth friend. As you explore each unique piece, reflect on your path "traveling with friends together" (wijiwaagan).

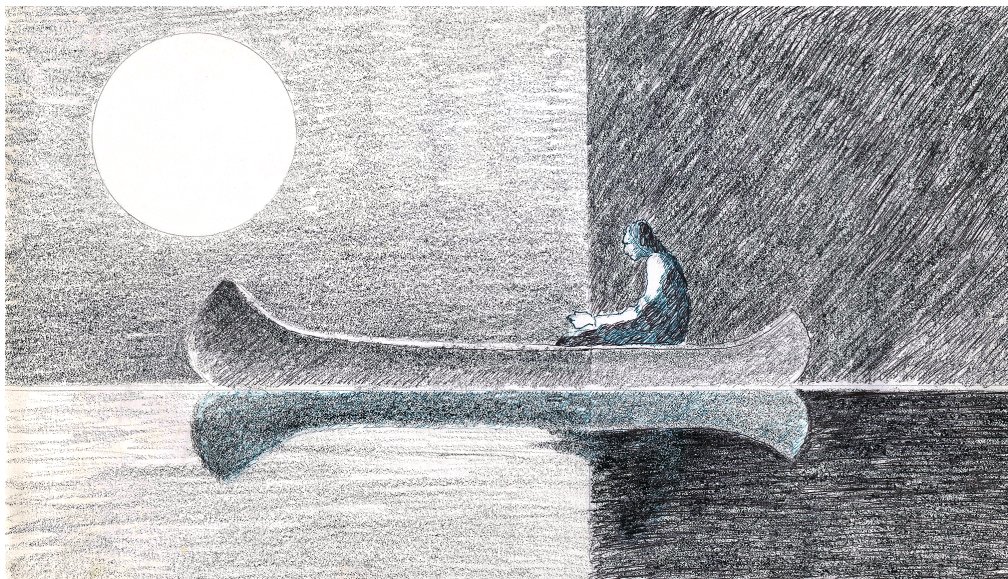


Image: Joe Geshick, untitled sketch for *The Feeding of The Spirit*, ink and graphite on paper, Geschick Family Collection

Jonathan Thunder Suspension of Disbelief

On View: July 12 - September 2, 2018
Corridor Gallery

The term suspension of disbelief has been defined as a willingness to suspend one's critical faculties and believe something surreal. Thunder's project will feature sound and what he calls 'animated canvases', a hybrid of hand painting and animation. The space will serve as an area for the artist to experiment with a variety of media and modes of installation in working towards a large-scale exhibition. There will be an artist talk at the close of the exhibition.

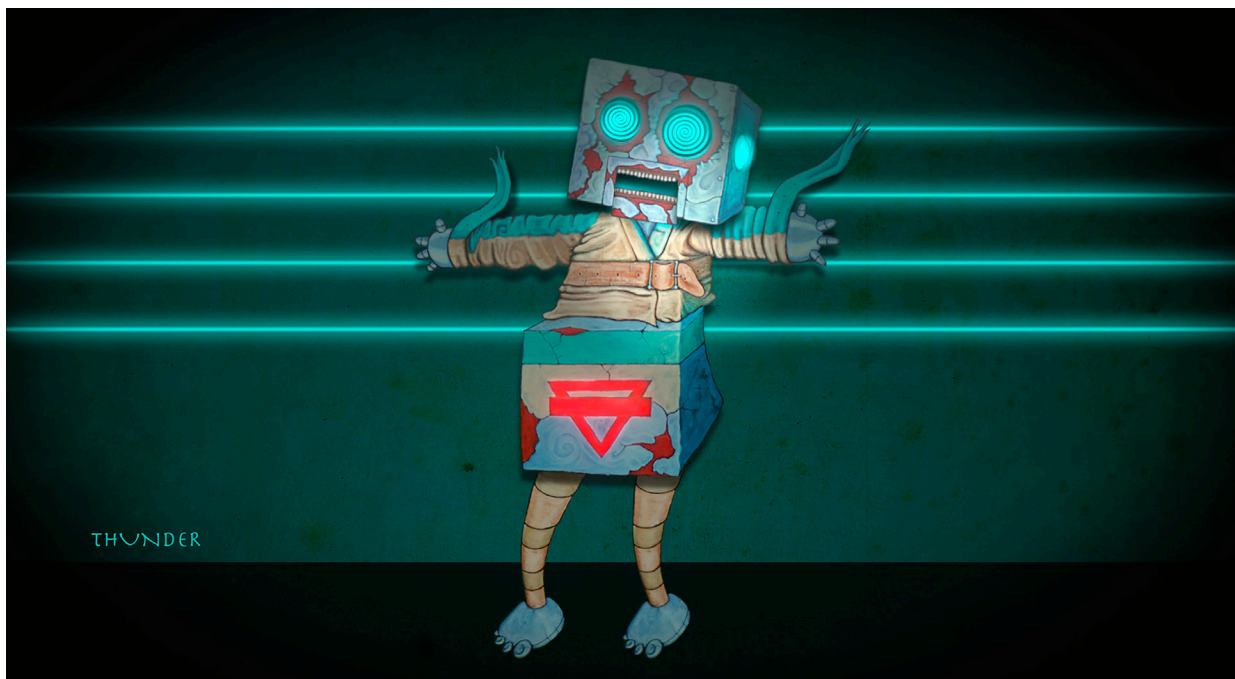


Image: Jonathan Thunder, *Psycho Lounge Bot*, 2018, animation still

ANNOUNCEMENTS



Jonathan Herrera: *Querida Presencia (Beloved Presence)*; Installation Detail, 2018

DAI / EDITIONS



Tara Austin, *Boreal II*, 2016, acrylic on plexiglass

The Duluth Art Institute is excited to launch DAI / EDITIONS in July! The editions provide an opportunity for both artists to have their work be seen, enjoyed, and shared well beyond the time constraints of an exhibition. Providing artist support is integral to our mission and one more way to connect them to a larger audience.

Beginning July 1st the Duluth Art Institute is excited to offer limited edition artist prints from Jonathan Herrera and Tara Austin. Each museum quality 8" x 10" print will be signed and numbered by the artist. The cost per print is \$30 with proceeds going directly to the artist and the DAI Exhibitions Program.

For more information and to purchase, please contact Jason Pearson at jpearson@duluthartinstitute.org.

Welcome our DAI Summer Interns

Volunteers and interns are an integral part of the success and day-to-day operations of an arts non-profit. Interns have the opportunity to develop a dynamic skill set, preparing them well for a career in the arts. We are incredibly grateful and excited to welcome and share our passion for the arts with our new summer interns!



Megan Finnegan

Megan is an intern who works with the Duluth Art Institute on various marketing projects and day-to-day operations. She enjoys art because of the way it impacts people's lives. She has worked on the Mural Initiative project with artist Sarah Brokke, developing and bringing to life murals for the Duluth community. Megan is an art and nursing student at the College of Saint Scholastica where she plans to graduate with a BFA and BSN. She hopes to one day become an art therapist or run a gallery.



Michael Moores

Michael is a junior at the College of Saint Scholastica and one of the curatorial interns at the Duluth Art Institute. He is pursuing a bachelor's degree in Art and History. In his spare time he enjoys drawing and reading anything written by Stephen King. He is hoping to learn how a museum works on a day to day basis and what it might be like to work there.



Angelina Mckinnon

Angelina began taking photographs during her first year at the University of Wisconsin-Superior where she studied art and photography. After taking her first year photography class in 2013, she fell in love with the gelatin silver print process and has been creating images using this process ever since. She earned her BFA in Studio Art from UWS in 2018, and continues to love and work in the Twin Ports area, making photographic, sculptural, and mixed media work.

Image: Angelina Mckinnon, Detail from "Portrait Series, #2", 2018, gelatin silver print



Riley Loew

Riley is a senior at the University of Minnesota Duluth studying Marketing and Graphic Design. He enjoys spending his free time outside observing the beauty within nature. His passion is macro photography. His favorite subjects to capture are insects, spiders, mushrooms, and all the other small things people tend to look past.

Melody David-McKnight

My Great Granny grew up in Duluth and my grandmother lived in Duluth as a young mother while my grandfather was in the airforce, but I grew up in Chatfield, Minnesota. We came camping up the shore every year growing up, and I attended college at UMD. I've lived in Duluth for a grand total of 9 years, with stints in Vermont in between. I draw inspiration from the moods of Lake Superior and all of its diverse color tones. I tell people that the air that Lake Superior wears around her is so cool and fresh that it lightens your mind and clears your thoughts! In addition to pottery I love road-bike touring, sea kayaking, but have spent most of my free time during the last three years seeing how much food I can grow to last longer into the winter each year. My record so far without is December!



Why did you become a DAI member?

I took my first pottery class in Middlesex, Vermont, at Montpelier Mud, after observing my roommate's mother's pottery class creations develop from lumpy bowls to beautiful, shapely eating vessels. I spent a lot of time in the studio practicing, and was hooked! So when I moved back to Duluth, where I previously attended college, I looked up where I could continue to practice with pottery and became a member of the DAI!

How has art impacted you or your community?

I think that art offers hope and inspiration for what the world CAN be like! Beauty and creativity as embodied in art renew spaces, disrupt our routine of thoughts and actions, remind us what is most deeply important to us, and invite us to inhabit our world in more fulfilling ways. I am grateful to rent a pottery studio space - it's a place where I can slow down, tune out worries and distractions, focus in on the clay and colors, and be myself!

As an art enthusiast, what opportunities do you find at the DAI?

And with my membership I am also able to take my family to the Duluth Train Museum, where I still think I will go sit in the caboose and write letters . . . but haven't had time yet! :)

Your Support Builds Community

What if someone told you that art saves lives? How would you respond? In the few months I have been at the Duluth Art Institute, I have heard this. My response is always, "Tell me more."

Since as far back as I can remember art has impacted my life through the medium of story. The compelling expressions of how people grapple with life enriches my own.

Artists share with me over and over how the DAI enriches their lives, saving their lives. The opportunities to improve their practice through classes, exhibit art in a gallery, have catalogs created about their shows, and helping connect their narratives to other galleries engages the whole being. One artist who grapples with social interaction shared the only time he can interact with people is through talking about his art. A young artist so sure she was born an artist creates drawings that lift her perspective of the world, though a lens of a physical challenge. Where would these stories be shared if not through the creation of visual art and the opportunity to show work in a gallery.

The Duluth Art Institute values service to artists, people who seek artistic lessons, and patrons who engage in viewing art. We are a 501c3 that operates on the generosity of funders, studio renters, and donors like you. Please consider a summer gift to the Duluth Art Institute. Your donation supports engaging exhibitions, exceptional arts programming for youth to adults, and free days for families to create together. Visit www.duluthartinstitute.org to donate online, find our address, or find our phone number. Thank you for your curiosity and we look forward to seeing you!

CERAMICS

Raku Firing

with Pete Prudhomme

Tuesdays, 6:30 - 9 PM

August 14 - October 9

(No Class August 21)

Firing Day: TBD (Off Site)

\$250 (\$300 non-members)

Learn the Raku process from making work to firing. Experiment with glazes, horse hair, and pop off slip. Produce and glaze pieces at the Duluth Art Institute Lincoln Park Building prior to firing off site.

OPEN STUDIOS

Open Studio at the Duluth Depot

Tuesdays, ongoing

12:30 - 3 PM

\$5/session + DAI Membership

@ Duluth Depot - Classroom

We offer regular sessions at the DAI Depot site. No matter what your medium or ability, join a weekly art group for practice and camaraderie. Bring your own supplies.



Image: Duluth Art Institute



Image: Duluth Handcrafters Fiber Guild

FIBER ARTS

Wine & Weave

with Sue Brown

Tuesday, September 18

9 AM - 4 PM

\$35 (\$45 non-member)

Duluth Fiber Handcrafters Guild Studio at the Depot

The looms are wrapped and ready to weave! Enjoy the fun of weaving without all the prep work...and with a glass of wine. Complete a rag rug placemat and get a taste of what weaving on a floor loom is all about.

Marian Dahlberg from Väva! Veve!

Weaving Linen Handtowels

Saturday and Sunday

October 6 - 7

8:30 AM - 4:30 PM

\$135 (\$165 non-member)

Duluth Fiber Handcrafters Guild Studio at the Depot

Väva! Veve! studio specializes in heirloom quality, eco-friendly linen textiles. Weaving on vintage floor looms in a small Minnesotan studio, Dahlberg explains that weaving linen doesn't have to be scary or frustrating! You'll gain a NEW understanding of linen and its capabilities while reducing your fear of using it to weave. Learn tricks to handle linen yarn and how to achieve the classic center stripe and Dahlberg's signature hanging tab. *Materials provided by Duluth Fiber Handcrafters Guild for one 24" x 24" hand towel using 16/2 wet-spun line linen. Registration deadline: September 5th. Participants warp Fiber Guild looms at the Depot Studio prior to workshop.*

DRAWING & PAINTING

Supply lists available on our website

Sacred Feminine

with Sarah Brokke Erickson

Friday, August 3, 6 - 8:30 PM and

Saturday, August 4, 9 AM - 2 PM

FREE

Explore your own embodiment of the Sacred Feminine through the processes and artistic practices of artist Sarah Brokke. Through demonstrations and experimentation, examine personal identity through painting. *Some experience handling paint preferred but not required.*

Sarah Brokke is a fiscal year 2018 recipient of an Artist Initiative grant from the Minnesota State Arts Board. This activity is made possible by the voters of Minnesota through a grant from the Legislature; and by a grant from the National Endowment from the Arts and in-kind donations from the Duluth Art Institute.

Art in the Yurt

with Adam Swanson

Friday, August 24

6 - 8:30 PM

\$40

Hartley Nature Center

Share a beer with local artist Adam Swanson while infusing art into your expressive self. Paint a unique work of art under guided instruction that provides structure for the beginning artist yet room to experiment for the more experienced. All supplies and one beverage included.

Full Moon Plein Air Painting

with Karen Savage Blue

Monday, September 24

7 - 9:30 PM

\$40

Hartley Nature Center

Karen Savage Blue grew up roaming the fields of Hartley and is excited to share this natural sanctuary with participants of all levels. Paint with an award-winning artist whilst sipping a beverage under the full moon. All supplies and one beverage included.

CLASSES

MIXED MEDIA

Art, Naturally

\$40

**Hartley Nature Center
In Partnership with the DAI,
Hartley Nature Center, and
Western Bank**

Immerse yourself in nature to connect with your creative side. Local artists lead on evening painting, felting, and sketching classes at Hartley Nature Center. All materials and one beverage included.

Painting in the Yurt with Adam Swanson

Friday, August 24, 2018

6 - 8:30 PM

Painting Under the Full Moon

with Karen Savage Blue

Monday, September 24, 2018

7 - 9:30 PM

Felting

with Mary Reichert

Friday, January 25, 2019

6 - 8:30 PM

Nature Sketching and Collage

with Susanna Gaunt

Wednesday, June 19, 2019

6 - 8:30 PM



Image: Duluth Art Institute

SUMMER CAMPS

ArtVenture Youth Camps

\$220 (\$275 non-members)

Ages 7 - 12

Youth are inspired to create work that is uniquely their own! Explore different media and methods using clay, plaster, wire, paint, chalk, oil pastels, and real canvases. All day youth summer camps are instructed by licensed art teachers in the state of Minnesota.

Week 1: July 9 - 13, 9 AM - 4 PM

Rebecca Layman

Week 2: July 16 - 20, 9 AM - 4 PM

Rebecca Layman

Week 3: July 23 - 27, 9 AM - 4 PM

Aryn Bergsven

BeTween Art

with Chrissy Valento

August 6 - 10, 9 AM - 1 PM

\$120 (\$150 non-members)

Ages 10 - 15

Enjoy a dynamic week with Chrissy Valento as you explore art through drawing, painting, sculpture, multi-media, and more. Challenge yourself and get inspired by creating with your peers in a supportive and encouraging environment.

Fabulous Fiber Art for Kids

with Aryn Bergsven

\$110 (\$135 non-members)

Ages 7 - 12

Duluth Depot

Weave your way through camp exploring the craft of fiber arts: felting, hand dying, loom weaving with the Duluth Handcrafters Fiber Guild, bracelet braiding, and more!

August 13 - 17, 9 AM - 12 PM

August 13 - 17, 1 - 4 PM

FREE FOR THE FAMILY

Art Canopy

Tuesdays, July 10, 17, 24, 31

11:15 AM - 12:15 PM

FREE

**Under the Duluth Depot Canopy on
Michigan Street**

Adventure into art with free demonstrations and art making experiences this summer. Each week find yourself immersed in creativity. Get inspired and get messy! Free and open to the public. Free Mrs. Delicious treats to the first 25 participants on July 10th!

Art Naturally

Painting
08|24|18

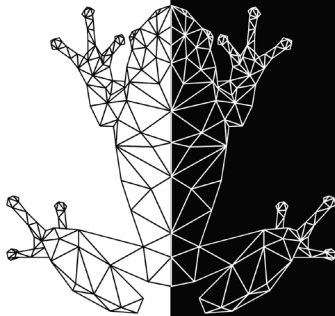
Painting
09|24|18

Felting
01|25|19

Sketching
06|19|19



Hartley Nature Center



QUESTIONS & REGISTRATION: Call our main office at 218. 733. 7560

LOCATION: All classes are at the Lincoln Park Building, 2229 W 2nd Street, unless noted.

PAYMENT: Class tuition must be received at least one week before class begins to ensure both your place and adequate class materials. If there is insufficient enrollment, we will cancel the class, notify registered students, and refund all payments. Non-refundable registration fees are due upon enrollment. See website for details.



DULUTH ART INSTITUTE

The mission of the Duluth Art Institute is to enrich daily life with dynamic, innovative visual arts programming that upholds excellence and promotes active community participation.

FOUNDED IN 1907, the Duluth Art Institute serves as a hub for creativity, new ideas, and community engagement through the visual arts. We welcome people of all ages, abilities, and skill levels. We deliver our mission through exhibitions, art making, and learning opportunities. The Duluth Art Institute strives to deliver fresh, quality programming that nurtures and energizes all facets of the visual arts in the Twin Ports.

EXHIBITION PROGRAM

The Duluth Art Institute produces an average of 15 exhibitions every year that highlight regional talent as well as visiting artists. We celebrate craft traditions as well as contemporary voices in the visual arts displaying the work of emerging, mid-career, and established artists in diverse mediums. We offer enhancement programs alongside our exhibitions to provide arts audiences deeper engagement with artists and their work.

EDUCATION PROGRAM

We offer more than 50 arts workshops and classes for youth and adults throughout the year as well as outreach activities throughout the community. Our education program also maintains a ceramics studio with more than 35 renters, as well as a fiber studio and darkroom.

DAI STAFF

Christina Woods
Executive Director
218. 733. 7562
cwoods@duluthartinstitute.org

Amy Varsek
Education Director
218. 723. 1310
avarsek@duluthartinstitute.org

Jason Pearson
Curator
218. 733. 7565
jpearson@duluthartinstitute.org

Genevieve Hircock
Operations and Marketing Manager
218. 733. 7560
ghircock@duluthartinstitute.org

DAI Clay Studio
218. 733. 7110
claystudio@duluthartinstitute.org

BOARD OF DIRECTORS

Helena Jackson, President	
Celia Cameron, Vice President	
Marva Beckman	
Erin Endsley	David Short
Robin Murphy	Robin Washington
David Sadowski	Jennifer Webb

VISITOR INFORMATION

Galleries and offices are located on Level Four of the **Duluth Depot - 506 West Michigan Street**. While some Depot museums require paid admission, the DAI is always free to members. Galleries are accessible by wheelchair. The DAI Darkroom is on Level Two, and the Fiber Studio is on Level One. The DAI Ceramics Studio and multi-use classrooms are located at the **Lincoln Park Building - 2229 W 2nd St.** (corner of N 23rd Ave. W).

GALLERY HOURS

Open Daily 9 AM - 6 PM
(Memorial - Labor Day)

BUSINESS OFFICE HOURS

Tuesday - Friday 9 AM - 5 PM

PARKING

Metered parking for the Depot is available on city streets, and the Library/Depot Lot - 502 West Michigan Street – is open with a pay station that includes \$1 bills, coins, and credit card options. A bus transit center is nearby with year-round access, and DAI is also accessible by the Port Town Trolley in summer months. For the Lincoln Center, a small parking lot is available on the West side of the building.



DAI Lincoln Park Building
2229 W 2nd St.
Duluth, MN 55806
218. 723. 1310



DAI Business Office & Galleries
506 W Michigan St.
Duluth, MN 55802
218. 733. 7560

Duluth Art Institute
 @DuluthArt
 DuluthArt

info@duluthartinstitute.org
www.duluthartinstitute.org

MEMBER SUPPORT

FOUNDATION SUPPORT

Arrowhead Regional Arts Council
Depot Foundation
Duluth Superior Area Community Foundation
The Facilitating Racial Equity Collaborative
Lloyd K. Johnson Foundation
McKnight Foundation
Minnesota Historical Society
Minnesota State Arts Board

BUSINESS SUPPORT

Barefoot Florista
Bent Paddle Brewing Co.
Blacklist Artisan Ales
Carlson Orthodontics
Cartier Agency
CPL Imaging
Diversity Consulting
Duluth News Tribune
Historic Union Depot Corp.
Lizzard's Art Gallery & Framing
Pro Print
Steven William Construction
SOUND
St Luke's
US Bank
Western National Bank
Whole Foods Co-op

NEWS MAGAZINE SPONSORS

Hanft Fride Professional Assoc.
Pro Print
siiviis
UMD Stores
Zeitgeist Arts

BENEFACTOR MEMBERS

David Gaddie
Helena Jackson & Doug Dunham
Janet Sklaris

COLLECTOR MEMBERS

Virginia Alexander
Mary Austin
Chris Carlson
Adu Gindy & Scott Bertas
Rosemary & Steve Guttormsson
Richard & Bea Levey

CONTRIBUTING MEMBERS

James & Susan Banks
Shelley Breitzmann
Sue Brown
Ken Buehler
Patricia & Bill Burns
Terry & Katie Chmielewski
Steve & Margaret Downing
Erin Ednsley & John Sager
Tammy & Dean Fox
Susanna Gaunt
Edith Greene
Clyde Holmes
Leslie Hughes
Ted & Ruth Johnson
Matt & Laurie Kania
Danny Klotz
Dennis Lamkin & Jon Niemi
Joleen Linn
Dale Lucas
Gerry & Beverly Martin
Lisa & David Mattke
Joe & Karen Nease
Sandi Pillsbury Gredzens
Stacie Renne
Drew Roush
Jaclyn Sathers
Kim & Steve Squillace
Subhash Vidyarthi
Jacqui Whelan

VOLUNTEERS & INTERNS

The Duluth Art Institute would like to thank the interns and volunteers who give so generously of their time and talents!

Interested in volunteering or interning with the Duluth Art Institute? Please send an email to Genevieve, Operations and Marketing Manager, at ghircock@duluthartinstitute.org.

INDIVIDUAL & FAMILY MEMBERS LISTED AT

DULUTHARTINSTITUTE.ORG/SUPPORTERS

ARROWHEAD
REGIONAL
ARTS
COUNCIL



Operating support is made possible in part by the voters of Minnesota through a grant from the Arrowhead Regional Arts Council, thanks to a legislative appropriation from the arts and cultural heritage fund.

The Duluth Art Institute's programs and services are made possible in part through the support of the Minnesota State Arts Board through an appropriation by the State Legislature from the Minnesota arts and cultural heritage fund with money from the vote of the people of Minnesota on November 4, 2008.

Nonprofit U.S.
Postage
PAID
Duluth, MN
Permit No. 6

NOVEMBER 3 2018

**MASQUERADE
GALA**

**Duluth Art
Institute**