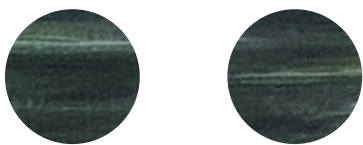
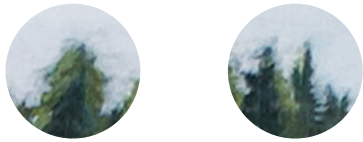


# HUE



Summer 2022

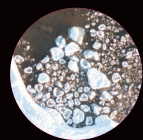
# CONTENTS



03 From the Director



04 On View



08 Classes & Open Studios



11 Events



12 Member Spotlight



14 Members



16 Musings

## Who We Are

The Duluth Art Institute enriches daily life with dynamic, innovative visual arts programming that upholds excellence and promotes inclusive community participation.

**Image Credit, Front & Back Cover:** Shawna Gilmore, "Nicholas Needs A Moment" (detail), charcoal and acrylic on cradled wood panel, 2022, 24"x36"

# DIRECTOR

## A Community of Stories

Christina Woods



There isn't a stronger connection between people than storytelling.

—Jimmy Neil Smith

Storytelling is at the core of the creative process and visual art. The story may be your own as a viewer, the artist's original vision, or some common ground in between. We strive to empathize and learn from others' experiences, perhaps to find genuine connection, perhaps as a shortcut to happiness or wisdom. Whatever the motivation, it is the power of story that links us.

The exhibition Contemporary Visions draws on the power of relationships and stories. Artist Christopher Harrison adapts the stories within the famous Migration Series by Jacob Lawrence, connecting the 1940s series to history being made today, the questions we still confront, and the relationships we need to resolve to find answers. Like Harrison's work, this season's exhibitions, classes, and events tell the tale of one-on-one relationships, societal relationships, our relationships with the constructs of "home," our place in nature, and our connection to self.



It is the power of story that links us.



As you peruse HUE, you will discover opportunities to connect with new people, indulge in a story that reclaims memories, or learn about yourself through a new skill or medium. The Duluth Art Institute is a great place to get involved in community, listen to community, and build community. We hope you'll engage deeply in art this season and become a part of our story.

Although the language of art is universal, communicating about art involves a vocabulary of its own. Look for the → symbol at the bottom of the pages throughout this issue for terms to use during your next gallery visit or class.

→ **Motif:** A distinctive, often recurring feature in a composition or body of work



**Morrison Gallery**

Steven Lemke &  
Kelsie Ward  
*Dislocation*  
June 8–September 22

**Steffl Gallery**

Christopher E. Harrison  
*Contemporary Visions*  
May 9–September 5  
Available on Smartify

Avigail Manneberg  
*Shared Bodies*  
September 19–December 5  
**Artist Talk: October 7**

**Corridor Gallery**

Wynn Davis  
*Salvaged Memories*  
June 8–September 18

Jaafar Alnabi & Ahmed  
Alshaikhli  
*Home of Memories:  
Portraits and Stories of  
Iraqi Minnesotans*  
September 26–December 31  
**Artist Talk: October 7**

**Depot Performing  
Arts Wing**

Sara Pajunen  
*Gitchi-gami*  
Summer 2022

## Shared Bodies

**Avigail Manneberg**  
John Steffl Gallery

**"**I held my mother's hand while she was dying. I panted with her on her final breath. In that transformative moment, both worlds of motherhood merged in me: the paced breathing of giving birth and final attempts for air before death. I encounter my mother every day as we now share bodies. Mother and motherhood, body and embodiment are concepts beyond a physical place."

– Avigail Manneberg

Artist Avigail Manneberg works across media: painting, drawing, video, and performance. *Shared Bodies* showcases abstract acrylics on canvas using soft, ambient colors. Emerging female figures and hands embody birth, physicality, and death. Manneberg asks: with the loss of one's parents, to what extent is one uprooted from their physical place perceived as home? Through this exhibition, Manneberg challenges how one defines, imagines, builds, and rebuilds home.

*Avigail Manneberg is a Minneapolis-based artist. She received a Bachelor's in Design from the Bezalel Academy of Art and Design in Jerusalem in 2006 and an MFA from the University of Minnesota in 2012. She teaches studio arts at the University of Minnesota and at the Minneapolis College of Art and Design and has exhibited work at galleries, universities, and museums in the USA and internationally.*

*Her work is in direct response to personal and global life events; for example, the chaos experienced by those fleeing conflict. "At a time of continual flux, my art grapples with national and cultural identity through the case study of my own history in relation to my home country of Israel."*

**Image Credit:** Avigail Manneberg, "Shared Bodies," acrylic on canvas, 3'x4'

➔ **Biomorphic:** From the Greek *bios* (life) and *morphe* (form), abstract forms that resemble living forms such as plants & bodies



# Gitchi-gami

Sara Pajunen  
Depot Performing Arts Wing

"Gitchi-gami, meaning 'big sea' or 'huge water,' is one romanized version of the Ojibwe name for Lake Superior. Its use honors the people who have cared for this area over many centuries."

– Sara Pajunen

Trained as a violinist, Sara Pajunen composes music, using sound and visual art to connect to the environment. Her drone images, *Gitchi-gami*, on view this summer in the Depot Performing Arts Wing, document the stamp sands in Gay, Michigan. Finely crushed waste rock from copper mining dominates the shoreline, although the nearby mill closed in 1932. With tailings traveling over 1,400 acres, fish breeding grounds and wetlands continue to be threatened. Pajunen's images affirm the beauty of the Lake Superior region while bringing attention to its environmental health.

*Born on the Mesabi Iron Range of Minnesota, Sara Pajunen is based in Duluth and Minneapolis and has performed extensively in Europe and North America. She fosters a deep connection to her ancestral roots, American cultural histories, and our environment. She holds classical music degrees in both the United States and Finland, and a Master of Music in Contemporary Improvisation from New England Conservatory.*

**Image Credit:** Sara Pajunen, "Gitchi-Gami 2," digital photography, 2022. Photographed near 47° 17' 56.982" N, 88° 2' 49.09" W / Keweenaw Peninsula, Michigan



بورتريه و قصص من عراقيي مينيسوتا

# HOME OF MEMORIES

Portraits & Stories of Iraqi Minnesotans

Jaafar Alnabi & Ahmed Alshaikhli | Corridor Gallery

"In this work, I share the sufferings and joys of people by keeping their memories active and their integration into different societies."

– Ahmed Alshaikhli

Explore Iraqi-Minnesotan portrayals of home through images, stories, and artifacts. Photographers Ahmed Alshaikhli and Jaafar Alnabi capture the personalities and passions of Iraqi-Minnesotans and offer an authentic glimpse into their lives. Interview highlights alongside portrait photos illuminate stories from a diverse range of Iraq's regions, ethnicities, and religions. Together, Alnabi and Alshaikhli examine what home was, is, and can be.

*Home of Memories* is a traveling exhibition curated by CarryOn Homes (Peng Wu, Shun Jie Yong, Zoe Cinel), and produced as part of Iraqi Voices, a collaborative arts storytelling lab run by Minneapolis nonprofit The Iraqi and American Reconciliation Project.

**Jaafar Alnabi** is a multidisciplinary artist with a focus on filmmaking and visual effects. He is a 2016 graduate of the Minneapolis College of Art and Design filmmaking BFA program. He moved to Minnesota in 1996 and is now based in New York City, working between NYC and Minneapolis.

**Ahmed Alshaikhli** is a seasoned photojournalist, working at prominent Iraqi and international television broadcasters and with the U.S. Joint Chiefs of Staff in Iraq. He moved to the U.S. in 2014 and settled in Minnesota with his family in 2016.

The *Home of Memories* Tour is made possible in part by the Metropolitan Regional Arts Council and the Minnesota State Arts Board, thanks to a legislative appropriation from the Arts and Cultural Heritage Fund.



# CLASSES

## Hand-Building Basics & Beyond with Holly Jorde

Thursdays (9 Sessions)

September 8–November 10

\*No Class on October 6\*

6:30pm–9:00pm

DAI Lincoln Park Building

2229 W 2nd Street

\$240 Member (\$270 Non-Member)

Find out how fun, fast, and meditative hand-building with clay can be! Walk through the processes of pinch, soft slab, stiff slab, and coil. Explore functional or sculptural forms, or a combination of both. Detailing the surface includes learning about textures, layered slips, sgraffito, Mishima, stencils, and glaze options. Discussions about contemporary ceramics and the creative process highlight the experience as well as opportunities for individual and group critique.

## Invasive Color: Using Invasive Species as Natural Dyes with Theresa Hornstein

Thursdays (3 Sessions)

September 15, 22, 29

6:00pm–8:00pm

DAI Lincoln Park Building

2229 W 2nd Street

\$80 Member (\$95 Non-Member)

Natural dyes have a history going back before the written word. Contrary to the dingy browns so often depicted in historic movies, our ancestors produced golds, bright pinks, oranges, blues, and greens. This workshop explores several traditional natural dyes. Students will learn plant identification, a bit of natural history, and how to use plants to create beautiful colors for hand-dyed yarn. Experimentation

includes the use of modifiers and mordants as well as several different methods for obtaining colors. Each student creates a minimum of 8 different dyed skeins, approximately 25 yards each. All materials will be provided. Students should bring a plastic bag for samples.

## Beginning Clay with Craig Bruce

Tuesdays (8 Sessions)

September 27–November 22

\*No Class on October 25

6:30pm–9:00pm

DAI Lincoln Park Building

2229 W 2nd Street

\$215 Member (\$245 Non-Member)

Learn and practice the basics of throwing on the potter's wheel from centering to glazing. Clay, glazes, and firing fees included. Open to all levels; instruction directed to the beginning potter, but intermediate students are welcome!

## Oil Painting with a Limited Color Palette with Matt Kania

Tuesdays (4 Sessions)

October 11, 18, 25, November 1

5:30pm–8:30pm

DAI Lincoln Park Building

2229 W. 2nd St.

\$100 (\$120 Non-Member)

Create stunningly beautiful oil paintings with the simplicity of a limited color palette. Limiting the palette allows for efficient and logical color mixing, instant color harmony across your canvas, and easier decision-making while painting. Students will examine limited palette paintings by famous painters, employ their colors to achieve similar results, and create their own original paintings based on the principles.

## Watercolor and Negative Painting with Jennifer Stone

Wednesday–Friday

October 19, 20, & 21

9:00am–4:00pm

DAI Lincoln Park Building

2229 W. 2nd St.

\$325 (\$390 Non-Member)

Explore new ways of painting to create depth and textural intrigue. Using unique props provided by the instructor, students will learn the process of painting roses. This process can be applied to a variety of subject matter, making your pieces truly one-of-a-kind. An award-winning artist for over 25 years, instructor Jennifer Stone's watercolors feature unconventional methods to enhance design, color, and texture in abstracted or non-representational work.

## Oil Painting from a Photograph with Matt Kania

Wednesdays (3 Sessions)

November 2, 9, 16

9:30am–12:30pm

DAI Lincoln Park Building

2229 W. 2nd St.

\$80 (\$100 Non-Member)

Create your own oil painting based on a photograph of a favorite place or memory. Bring a photograph to class—perhaps a beloved family dog, a landscape scene, or an event in your life. Students will be led through the process of learning to look at a photograph through the eyes of a painter, how to transfer a drawing of the image onto a canvas, and how to fully develop an oil painting that will inspire others.

COVID protocols & registration:  
DuluthArtInstitute.org/ClassRegistration

## YOUTH CLASSES

### Youth Pottery: Coiled Clay Creations with Liz Vandersteen

Saturdays (2 Sessions)\*

12:00pm–2:00pm

September 17 & 24

DAI Lincoln Park Building

2229 W 2nd Street

Ages 7–14

\$50 (\$60 Non-Member)

Explore the possibilities of coil building in ceramics. Working with clay coils allows for building and decorating almost any form. We'll start with instruction on making a simple coil bowl, and take off from there!

\*Because finished projects will need to be kiln-fired upon completion, a pick-up date of finished projects will be provided.

### Youth Art: Contour to Creature with Liz Vandersteen

Saturdays (2 Sessions)

12:00pm–2:00pm

October 1 & 8

DAI Lincoln Park Building

2229 W 2nd Street

Ages 9–14

\$40 (\$50 Non-Member)

A two-part class starting with a lesson in contour drawing and ending with a wire sculpture of your creature of choice. Continuous, free-flowing lines will serve as the foundation for both a drawing project and finished sculpture piece.

## TEEN OPEN STUDIO

### CALLING ALL YOUNG ARTISTS!

Every Other Tuesday

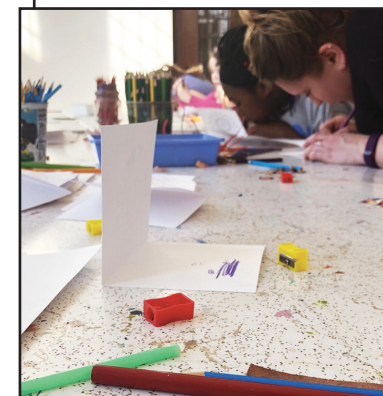
4:00pm–6:00pm

DAI Lincoln Park Building  
2229 W. 2nd St.

Ages 13–18

FREE

Teens 13–18 are invited to a free after-school art program. Bring your works-in-progress or create something new. College art students are present to provide help and advice. Basic supplies are provided and no previous art experience is required. Every Teen Open Studio includes food. Online registration preferred, but drop-ins welcome. Masks required. Thank you to the Lloyd K. Johnson Foundation for funding this opportunity.



→ **Sgraffito:** A pottery technique produced by scratching through colored layers to create a contrasting decorative surface

## OPEN STUDIOS

### Weekly Open Studio

Tuesdays, 12:30pm–3:30pm

DAI Lincoln Park Building  
2229 W. 2nd St.

\$5 + DAI Membership

Bring your supplies and artistic visions to the inspiring, historic Lincoln Park Building. Connect with other creative people and spend time experimenting with your medium of choice. Each session includes time to create and optional end-of-session group critiques. Non-members can attend one free session of open studio before becoming a member. Members receive three free sessions.

### Figure Drawing Open Studio

First Saturday of Each Month,  
10:00am–12:00pm

DAI Lincoln Park Building  
2229 W. 2nd St.

Ages 18+

\$10 (\$15 Non-Member)

Open to all serious artists, from beginner to expert. Every session includes a live model, starting with short gestural poses and moving into longer holds. Work time is self-directed, no instruction offered. Headphones and water bottles are welcome. Paper, sketching materials, and easels are available. This program is made possible by generous grant funding from the Lloyd K. Johnson Foundation.



# art. meets dads.

When creative expression and  
marketing insight sync, you:

## SWIM

Swimcreative.com

# EVENTS 11

## DAI MASQUERADE GALA WE ARE ART

OCTOBER 27, 2022

### SAVE THE DATE!



### Art Night Out: Reception and Artist Talks *Shared Bodies, Home of Memories, Robert Patrick*

Friday, October 7

Lake Superior Railroad Museum

St. Louis County Depot

506 W Michigan St.

FREE

### Free ArtDAI

Saturday, October 15 & Saturday, December 3

1:00pm–4:00pm

DAI Lincoln Park Building

2229 W. 2nd St.

Free | Open to all

→ **Ornamentation:** Beautifying, decorative accessories, adornment, or details added to an object or structure



## Member Spotlight

**Shawna Gilmore**  
**2022 Annual Member**  
**Show People's Choice**  
**Award Winner**



I enjoy creating work that prompts the viewer to imagine new possibilities. Often my narrative and character-driven work focuses on ideas of blending in, connection to place, and being a receptacle. "Nicholas Needs A Moment" explores the magic of pausing just for a bit. This painting is part of a greater collection of work based on an invented neighborhood called Mulberry Street. Each home on Mulberry Street has its own series of paintings representing the unique and adventurous lives of very different neighbors all united by their connection to place.

*Born and raised in the Upper Midwest, Shawna draws deeply from the winter-forged well of her overactive imagination. Her character-driven, narrative paintings explore human chameleonic behaviors. She commonly uses vintage photos, patterns, and interior/exterior elements in her surreal paintings. Shawna graduated in 2000 from the University of Minnesota-Duluth with a BFA in Studio Art, Emphasis on Drawing and Printmaking. Shawna lives with her verbally talented husband (Eddy), their twins, and a menagerie of critters in a lively neighborhood near lovely Lake Superior.*

**Image Credit:** Shawna Gilmore, "Nicholas Needs A Moment," charcoal and acrylic on cradled wood panel, 2022, 24"x36"

→ **Palette knife:** A flexible, thin utensil used to mix and apply paint



# MEMBERSHIP

Thank you to our current members. Membership is vital to the DAI, supporting education programs, exhibitions, and studio spaces.

To learn more about membership at the DAI, visit [www.duluthartinstitute.org/membership](http://www.duluthartinstitute.org/membership).

|   |                         |                         |                     |
|---|-------------------------|-------------------------|---------------------|
| <b>Benefactor Members</b>                       |                         |                         |                     |
| Judy Anderson                                   | Jill Anecki             | Craig Bruce             | Erin Endsley        |
| Julia Cheng                                     | Karen Annala            | Nancy Bundy             | Lee Englund         |
| Janet Sklaris                                   | Sarah Archbold          | Mary Calengor           | John Eskola         |
| Robin Washington**                              | Nancy Atzen             | Celia Cameron**         | Karl Everett        |
|   | Kirsten Aune            | Doug Cameron            | Claudia Faith**     |
|   | David Austin            | Zachary Campbell        | Olawole Famule**    |
| <b>Collector Members</b>                        |                         |                         |                     |
| Virginia Alexander                              | Elizabeth Axberg*       | Patricia Canelake       | Jane Fisher-Merritt |
| Gloria DeFilipps Brush                          | AJ Axtell               | Kathleen Cargill**      | John Fisher-Merritt |
| Bea Levey                                       | Mary Azmitia            | Kris Carlson            | Lisa Fitzpatrick    |
| Richard Levey                                   | Anna Bailey             | Alexa Carson            | Betty Fleissner     |
|   | Brian Barber            | Christie Carter Eliason | Anna Friesen        |
|   | Erin Bast               | Melissa Cedars          | Richard Fryberger   |
| <b>Contributing Members</b>                     |                         |                         |                     |
| Dean Fox  | George Bateman          | Tracy Chaplin           | Ericka Fryklepak    |
| Ella Fox  | Nathaniel Bateman       | Ann Choate              | Lisa Fuller         |
| John Fox  | Kirstin Baumgarten      | Naomi Christenson       | Dominic Furfaro     |
| Mattie Fox                                      | Emily Beaton            | Elsie Cook              | Mary Garness        |
| Tammy Fox                                       | Theresa Beaulier        | Tim Cortes              | Susanna Gaunt       |
| Rosemary Guttormsson                            | Timothy Beaulier        | Mary Cowen Bantle       | Linda Gerga         |
| Sarah Hannigan                                  | Amelia Beisang          | Andrea Crouse           | Shelley Getten      |
| Wendy Larson                                    | Jolene Beisang          | Renan Cruz              | Jill Geyer          |
| Dale Lucas                                      | Norah Beisang           | Anita Curtis            | Lauren Giammar      |
| Edie Michalski                                  | Mary Kay Berarducci     | Michael Dahmen          | Mollie Gilbertson*  |
| Roger Michalski                                 | Rita Bergstedt          | Melody David-McKnight   | Anita Gille         |
| Mark Newman                                     | Gladys Bergstedt        | Bob DeArmond*           | Shawna Gilmore      |
| Tammy Newman                                    | Aryn Bergsven           | Donald Delvin           | David Gilsvik       |
| Joellyn Rock                                    | Nancy Berini-Jespersion | The Depot Foundation    | Robb Glibbery       |
| Dr. Patricia Rogers**                           | Susan Betz              | Brianna Deterling       | Linda Glisson       |
| Rob Wittig                                      | Damita Beyer            | Martin DeWitt           | Melissa Goodson     |
|   | Laura Birnbaum          | Michael DeWitt          | Edith Greene        |
|   | Pat Black               | Joy Morgan Dey          | Rogier Gregoire**   |
| <b>Family, Individual &amp; Student Members</b> |                         |                         |                     |
| Lisa Alexander                                  | Sarah Black             | Dorothea Diver          | Megan Gregor        |
| Raymond Allard                                  | Roy Blackwood           | Gayle Dopp              | Daniel Grindle      |
| Wendy JD Althoen                                | Edna Blanchard          | Peggy Downing           | Ann Gumppper        |
| Misty Andersen                                  | Kay Bloom               | Steve Downing           | Patricia Hagen      |
| Dennis Anderson                                 | Ken Bloom               | Mary Beth Downs         | Amber Halenbeck     |
| Karen Anderson                                  | Libby Bolen             | Michele Dressel         | Suzanne Hanson      |
| Kenneth Anderson                                | Daniel Boyer            | Teja Dyamenahalli       | Nelia Harper        |
| Lynn Anderson                                   | Cynthia Bradley         | Joe Ehlers              | Chloe Harris        |
| Thomas Anderson                                 | Shelley Breitzmann      | Claire Ehlers-Nelson    | Katie Harvey        |
| Edward Dean Anecki                              | Evaline Britton         | Joanne Ellison          | Mark Harvey         |
|   | Carole Brossart         | Tom Ellison             | Art Headley         |
|   | Troy Brown              | Angela Elmendorf        | Emily Heiken        |

\*indicates Staff    \*\*indicates Board Member

|                            |                     |                        |                       |
|----------------------------|---------------------|------------------------|-----------------------|
| Kya Heiken                 | Jean Larson         | Summer Ava Nemeth      | Cynthia Shusta        |
| Margaret Helstrom          | Lily Latterell      | Ginga Newton           | Sandra Signorelli     |
| Jess Himango               | Peter Lawson        | Duke Nguyen            | Alfred Skinner        |
| Jill Hinners               | Mary Lee            | Oddio Nib              | Pam Skinner           |
| Thomas Hoff                | Ma. Loiselle Lehigh | John Nilmeyer          | Jason Smith           |
| Megan Hogfeldt             | Victoria Lehman     | Vern Northrup**        | Kari Smith            |
| Marisa Hoogenakker         | Patricia A. Lenz    | Angelina Nustad-Peluso | Pam Snyder            |
| Theresa Hornstein          | Kathryn E. Lenz P.  | Daniel O'Neill         | Emma Spooner*         |
| Leslie Hughes              | Diane Levar         | Peg Ocel               | Marjorie Stalker      |
| Amanda Hunter              | Melanie Lieb        | Sam Odden              | Sheila Staubus        |
| Matt Hunter                | Kelli Lien          | Patricia Olson         | Lisa Stauffer Steinke |
| Brandy Hutchinson          | Benjamin Lindello   | Todd Olson             | Adam Stevenson        |
| Helena Jackson             | Chris Loppnow       | Joseph Ostazeski       | David Stock           |
| Liz James                  | Christine Loppnow   | Jana Pastika           | Robin Strangfeld      |
| Debra James                | Barbara Lubovich    | Jeanette Paulson       | Thomas Strewler       |
| Ora Jewell-Busche          | Bill Lyth           | Sue Pavlatos           | Edna Stromquist       |
| Katherine Jivery           | Amy Madsen          | Linda Peplinski        | Timothy Sundquist     |
| Alyssa Johnson             | Linda Magni         | Liam Perry-Spears      | Adam Swanson          |
| Jean Johnson               | Robert Magnuson     | Sarah Perry-Spears     | Alyssa Swanson        |
| Patricia Johnson           | Susan Magnuson      | Willa Perry-Spears     | Regina Taylor         |
| Tad Johnson                | Clara Mahnke        | Julie Peterson         | Jason Terry           |
| Tyler Johnson**            | Patricia Mahnke     | David Peterson         | Jonathan Thunder      |
| Jennifer Jones             | Wally Mahnke        | Laurie Pinther         | Cynthia Tope          |
| Holly Jorde                | Jen Maki            | Linda Powless          | Mallory Towle         |
| John Justad                | Maryanne Malm       | Robert Powless         | Paul L. Tynjala       |
| Matt Kania                 | Deborah Manisto     | Nina Preheim           | Jarrett Vanderpoel    |
| Jan Karon                  | Deborah Marcero     | Ann Price              | Liz Vandersteen       |
| Karen Keenan               | Jasper Martinson    | John Prosen            | Amy Varsek*           |
| Juli Kellner**             | Mary Mathews        | Pete Prudhomme         | Elizabeth Vork-Howell |
| Stacey Kelly               | Micky McGilligan    | Erik Quackenbush       | Brandon Wait          |
| Christopher Kemnitz        | Robin McIntyre      | Erik Quackenbush       | Devin Wait            |
| Alexandria Kenney          | Stephen Menart      | Kris Rauschenfels      | Chris Watkins         |
| Tia Keobounpheng           | Rebecca Meyerson    | Sue Rauschenfels       | Megan Watkins         |
| Margaret Kirtley Sternberg | Marlene A. Miller   | Tom Rauschenfels       | Theodore Watkins      |
| Aaron Kloss                | Emily Mirra         | Kirsten Rhude          | Aurora Webster*       |
| Heather Knotts             | Heather Moe         | Sarah Riley            | Paul Webster          |
| Teresa Kolar               | Scott Moen          | Timothy Riley          | Greg Wegler           |
| Lynne Kosmach              | Roxanne Moline      | Jamey Ritter           | Michelle Wegler       |
| Lisa Kosmo                 | Rita Morris         | Sharon Rogers          | Todd White            |
| Kristen Kozelouzek         | Becca Mulenberg     | Lin Rose               | Kim Whittaker         |
| Joel Krochalk              | Laura Mullen        | Wendy Rouse            | Sharon Wichman        |
| Rita Krochalk              | Robin Murphy**      | Kristin Rudd           | Lynn Wilcox           |
| Susan Krochalk             | Scott Murphy        | John Sager             | Stephanie Wilcox      |
| Kimberly Krohn             | Karen Owsley Nease  | Doris Sampson          | Bill Wise             |
| Ines Krolo                 | Joseph Nease        | Jaclyn Sathers         | Denise Wise           |
| Tommy Kronquist            | Julie Nelson        | Lisa Savoy             | Christina Woods*      |
| Ed Labernik                | Colleen Nelson      | Kelly Schamberger      | Ruby Zallar           |
| Cot LaFond                 | August Nemeth       | Lissa Scotland         | Julie Zenner          |
| Shannon Laing              | Charlie Nemeth      | Cindy Seiler           | Kathy Zerwas          |
| Erica Lake                 | Katie Nemeth        | Raymond Shelerud       | Sam Zimmerman         |

➔ **Assemblage:** A three-dimensional work combining materials including found objects or experimental media



# MUSINGS

## Looking for Signposts of Joy and Agency

**Amanda McElray Hunter**  
*Multidisciplinary artist; Gallery Manager, Joseph Nease Gallery*



Working as both an artist and curator, I have found over the years that one informs the other.

Monday through Wednesday is my studio practice. On those days I create multi-media visual art: art objects such as handmade book forms, paper-dolls, games, collage dioramas, as well as large-scale drawings and paintings. I create these artworks as vehicles for retelling fairy tales, folklore, and myth from a Northwoods context and exploring intersections and issues related to environmental justice. My work is playful and draws from the realm of the child, but as in every fairy tale, dangerous omens and journeys lurk beneath—there are messages for adults, too. Currently, I am working on a body of work that will be an immersive exhibit in Spring 2023. This exhibit will encourage participants to retell their own stories and imagine new possibilities within.

Thursday through Saturday, I work as the Gallery Manager at Joseph Nease Gallery in downtown Duluth. My work as an artist helps me to understand the motivations and needs of the artists I work with and also to engage gallery visitors to see artwork as an experience rather than just a “thing” someone puts on a wall.

My work in the gallery on behalf of other artists encourages me to engage with diverse experiences and understandings of art which in turn inspires me to continue creating work.

I am fascinated by the artistic process and often share my own process on social media, so it's no surprise that I am surrounded by visual art day to day. It has a synthesizing effect on my life as a whole. As in so many things, what you seek out becomes what you give out. You breathe art in, you breathe art out. One thing I want art patrons to know is that “looking” or “seeing”—in the sense of witnessing—is a meaningful act. Applied to art, to look and to witness is also an action, an experience, just as making art is a meaning-making action. And supporting artists and galleries by purchasing work—so those artists can make more art—is also a meaningful act.

I feel fortunate to work downtown where other galleries and art centers are within walking distance. Often, when I need an extra dose of inspiration, I will head

over to another gallery or to the DAI to spend some time with their current exhibits. Staff members from the DAI, other galleries, and artists from our local community stop into our gallery as well. I really value that connection and creative exchange and am proud to be part of our supportive art community here in the Northland.

Art can serve many purposes: to educate, to entertain, to inspire, to give voice to the unheard, and, as the old argument goes, art also exists to exist. To me, this means that the act of creating is important in and of itself because it is a generative and hope-filled act. It's a signpost of joy and agency in an often grim world. My hope is that my own art, as well as the art of the other artists I curate and support, might offer space in which the viewer can experience what they need to experience in that moment. Where visual art, thoughtful curation, and engaged viewership combine, that corner of the world becomes just a little more sublime.

**Image Credit:** Amanda Hunter, detail of “Feral Biome - Fall Fest,” mixed media collage diorama, 2021, 22”x 20”x 2.5”

**Image Credit:** Tara Austin, “Zuzu's Petals,” acrylic on plexiglass, 2022, 51”x48”



# DAI • BENT PADDLE • FROST RIVER DRINK TOKEN KEYCHAINS

GOOD FOR 5 DRINKS  
AT BENT PADDLE  
[duluthartinstitute.org/Store](http://duluthartinstitute.org/Store)



**\$50** FULL COST  
GOES TO SUPPORT THE DAI

**ADVERTISE HERE!**  
[awebster@duluthartinstitute.org](mailto:awebster@duluthartinstitute.org)

HANFTLAW.COM  
**YOU MATTER  
HERE.**  
HANFT FRIDE  
LAW FIRM  
CLOQUET 218.879.3333 DULUTH 218.722.4766

**1/3 PAGE  
PROPRINT**  
(will be added at prepress)

The St. Louis County Depot is open and free to the public. For the best experience, please download a QR code reader and the Smartify app prior to visiting.

## DAI Staff

Christina Woods  
*Executive Director*  
218-733-7562  
[cwoods@duluthartinstitute.org](mailto:cwoods@duluthartinstitute.org)

Amy Varsek  
*Exhibitions Director*  
218-733-7565  
[avarsek@duluthartinstitute.org](mailto:avarsek@duluthartinstitute.org)

Aurora Webster  
*Engagement & Development Manager*  
218-733-7559  
[awebster@duluthartinstitute.org](mailto:awebster@duluthartinstitute.org)

Emma Spooner  
*Education Program Coordinator*  
218-723-1310  
[espooner@duluthartinstitute.org](mailto:espooner@duluthartinstitute.org)

Mollie Gilbertson  
*Administration & Engagement Assistant*  
218-733-7560  
[info@duluthartinstitute.org](mailto:info@duluthartinstitute.org)

Robert DeArmond  
*Clay Studio Manager*  
218-723-1310 ext. 201  
[claystudio@duluthartinstitute.org](mailto:claystudio@duluthartinstitute.org)

## Board of Directors

Robin Washington, President  
Celia Cameron, Vice President  
Juli Kellner, Treasurer  
Dr. Patricia Rogers, Secretary  
Kathleen Cargill  
Claudia Faith  
Olawole Famule  
Rogier Gregoire  
Tyler Johnson  
Robin Murphy  
Vern Northrup

## Visiting the DAI Galleries & Business Office

506 W Michigan St.  
Duluth, MN 55802  
218-733-7560

*Gallery Hours*  
Open Daily  
10AM - 5PM

*Business Office Hours*  
Tuesday-Friday  
12-5PM

Galleries and offices are located on Level Four of the St. Louis County Depot. While some Depot museums require paid admission, the DAI is free. Galleries are accessible by elevator. The DAI Darkroom is on Level Two.

Metered parking for the Depot is available on city streets, and the Library/Depot Pay Lot - 502 W Michigan Street. A bus transit center is two blocks away with year-round access, and DAI is also accessible by the Port Town Trolley in summer months. Parking for events occurring after 5PM is free.

Funded in part by the Jane S. Smith Memorial Fund of the Duluth Superior Area Community Foundation.

The Duluth Art Institute's programs and services are made possible in part through the support of the Minnesota State Arts Board through an appropriation by the State Legislature from the Minnesota arts and cultural heritage fund with money from the vote of the people of Minnesota on November 4, 2008.

## Visiting the DAI Lincoln Park Building

2229 W 2<sup>nd</sup> St.  
Duluth, MN 55806  
218-723-1310

Hours by appointment.

The DAI Ceramics Studio, Printmaking Studio, and multi-use classrooms are located at the Lincoln Park Building.

For the Lincoln Park Building, a small parking lot is available on the West side of the building, as well as free on-street parking.

Operating support for the Duluth Art Institute is brought to you by:

**NATIONAL  
ENDOWMENT for the ARTS**  
[arts.gov](http://arts.gov)

**DULUTH SUPERIOR AREA  
COMMUNITY  
FOUNDATION**

**MCKNIGHT FOUNDATION**

**Arts  
MIDWEST**

**MINNESOTA  
STATE ARTS BOARD**  
**CLEAN  
WATER  
LAND &  
LEGACY  
AMENDMENT**

**dAi** duluthART  
institute

**Oct 7**

**Art Night Out:  
Reception and  
Artist Talks**

*Shared Bodies and  
Home of Memories*

**Oct 15**

Free ArtDAI

**Oct 27**

**"We Are Art" DAI  
Masquerade Gala**

**Dec 3**

Free ArtDAI

See page 11 for more information  
about events.



506 W Michigan St.  
Duluth, MN 55802

# HUE

FOR  
A NEW  
POINT  
OF VIEW

**dAi** duluthART  
institute

Summer 2022

